



Passion for sound




SKYWALKER
SOUND
A LUCASFILM COMPANY

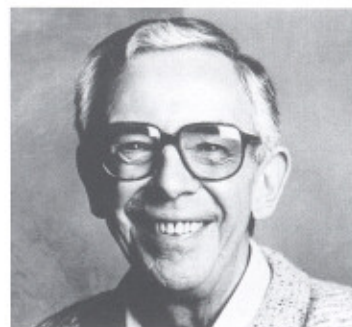
DECCA

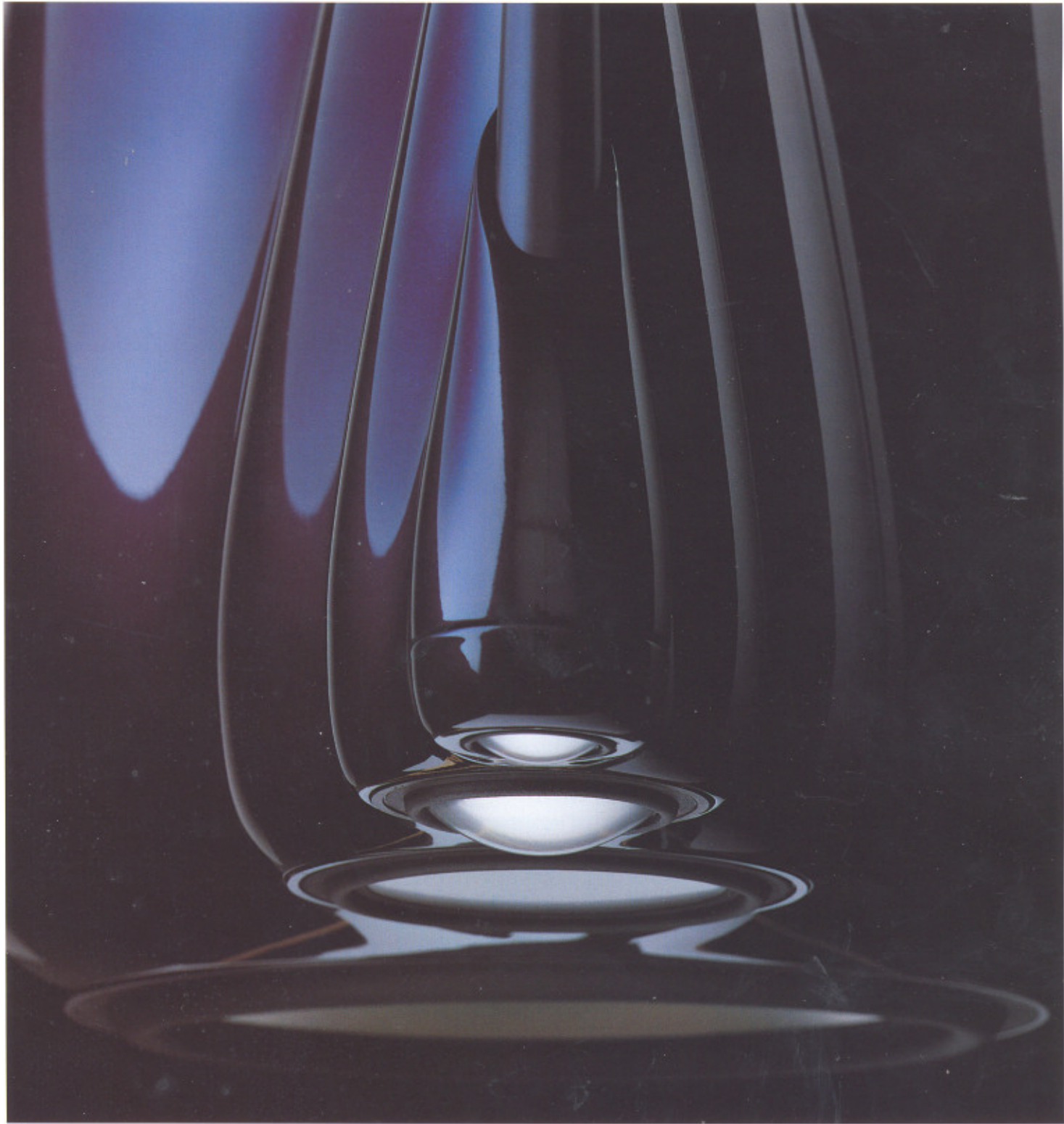



AbbeyRoad™

In leading recording studios around the world, music that will soon be heard everywhere is heard first through B&W speakers. At George Lucas' Skywalker Sound studios in Marin County, California, music is put to hit movies on the ultimate surround sound system, featuring B&W 800 Series monitors. And at Abbey Road, the world's most famous recording facility, all three main studios employ B&W speakers to capture the output of artists as diverse as Coldplay, U2, Michael Nyman, Groove Armada and The Thrills. When the world's most demanding users tell us what they think of our sound, we listen closely.

We've done it from day one. When John Bowers set up the company in 1966, experimentation in sound and recording was escalating rapidly. It was the time of Sergeant Pepper, Pet Sounds and Like A Rolling Stone. Bowers had a pioneering spirit to match. His ambition was revolutionary for the day, and remains so: to create a loudspeaker that neither added nor took away from the music. In effect, the perfect loudspeaker. We've been exploring the world of sound ever since. We'll never settle for less than perfection, so we'll never stop improving our speakers. Once you have a passion for sound, you never lose it.





John Bowers, B&W's founder, recognised that new discoveries were needed if his speakers were to advance the experience of recorded sound. Over 30 years ago, he took the radical step of setting up the B&W Research Establishment – aka the University of Sound – to conduct the world's most sophisticated studies of speaker behaviour and design the exclusive, groundbreaking technologies that cascade down to our more widely available models.

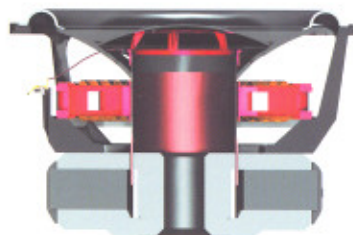
Inside B&W speakers are microcosms of our experience in sound: integrated systems of drive

units, electronic components and mechanical structures that encapsulate four decades of intense research, design and development. That's a long time in a laboratory. We haven't wasted a moment. Every working day adds to our knowledge. What we've been seeking is an experience in sound: one that delivers the listener to the time and place of the original performance, to the soul of the sound, in the wealth of its colour, intensity, depth and detail.



Diamond domes

B&W tweeters go a long way up the frequency scale. But now we've pushed the bar as far as it will go by introducing tweeter domes of pure diamond. It may seem extravagant but the move is simply an extension of B&W's pursuit of the perfect loudspeaker. Diamond gets closest to the behaviour of a hypothetical 'perfect tweeter' – one that only exists on a computer, with infinite stiffness – both within audible range and beyond it. The result is the ultimate tweeter dome, and a sound of almost impossible clarity.



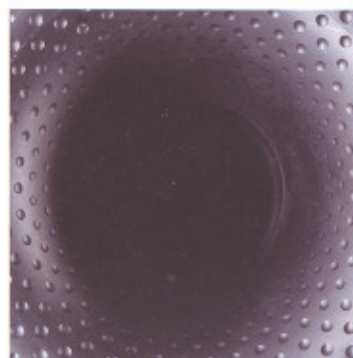
Bass units

Preserving the speed and 'slam' of the most demanding basslines is a question of construction. What we're aiming for is 'perfect piston' behaviour: the combination of lightness, agility and absolute rigidity. Rohacell®, the material we've selected to do the job in our larger high-end speakers can certainly take some punishment. It's a sophisticated hard foam used as a core in the kind of sandwich constructions that aircraft, rockets and performance cars bodies are made of. So high air pressures are definitely not a problem. For speed, stiffness and unshakable bass, it's the bottom line.



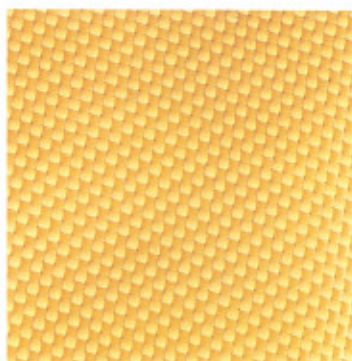
Tube-loaded tweeter

One of the breakthroughs made in the five-year research programme to develop our unique Nautilus™ loudspeaker was the tube-loaded tweeter. Unwanted sound radiation from the back of the diaphragm is spirited away into an acoustic black hole by a tapering, tubular tail, while the 'good' sound from the front is allowed by the close fit of the tweeter housing to disperse freely and create a truly three-dimensional sound 'image'.



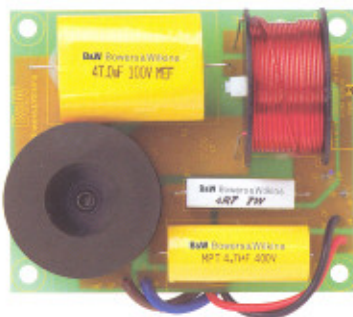
Flowport™

Getting the breathing right is a serious issue for singers – and speakers. Ports are the lungs of a loudspeaker, regulating the pressure inside the cabinet and allowing drivers to give full voice to bass frequencies. B&W's Flowport™ lets air oscillate in and out of the cabinet smoothly and silently, without any of the 'chuffing' sounds that affect conventional designs, thanks to the reduction of turbulence by 'dimples' in the surface. It takes the huff and puff out of bass in a way only found in B&W speakers.



Kevlar®/FST

Way back in the 1970s, we dared to be square by introducing midrange driver cones made of Kevlar®, a lightweight, high-strength woven fibre used in bulletproof vests. In the lab, using laser measurement, we'd traced its outstanding performance to the fibre's tight, square weave, which disrupted the formation of concentric standing waves and drastically reduced sound coloration. Since then, we have refined the closely-guarded resin recipe in which the material is soaked, and introduced our FST™ technology, which supports the Kevlar® cone edge with an acoustically matched foam ring designed to prevent energy being reflected back into the cone.



Crossovers

The mark of a good speaker is the simplicity of its crossovers. There's no need for a big, complex crossover if the quality of the drive units is high. The better the mechanical design is, the simpler the electrical design can be. And the simpler the crossover, the easier it is to refine its composition. Different manufacturers' versions of the same component can make a major difference to the finished sound. We're able to fine-tune our simplest crossovers by ear, conducting exhaustive listening tests to select the finest components and reach the purest, most natural-sounding combination.



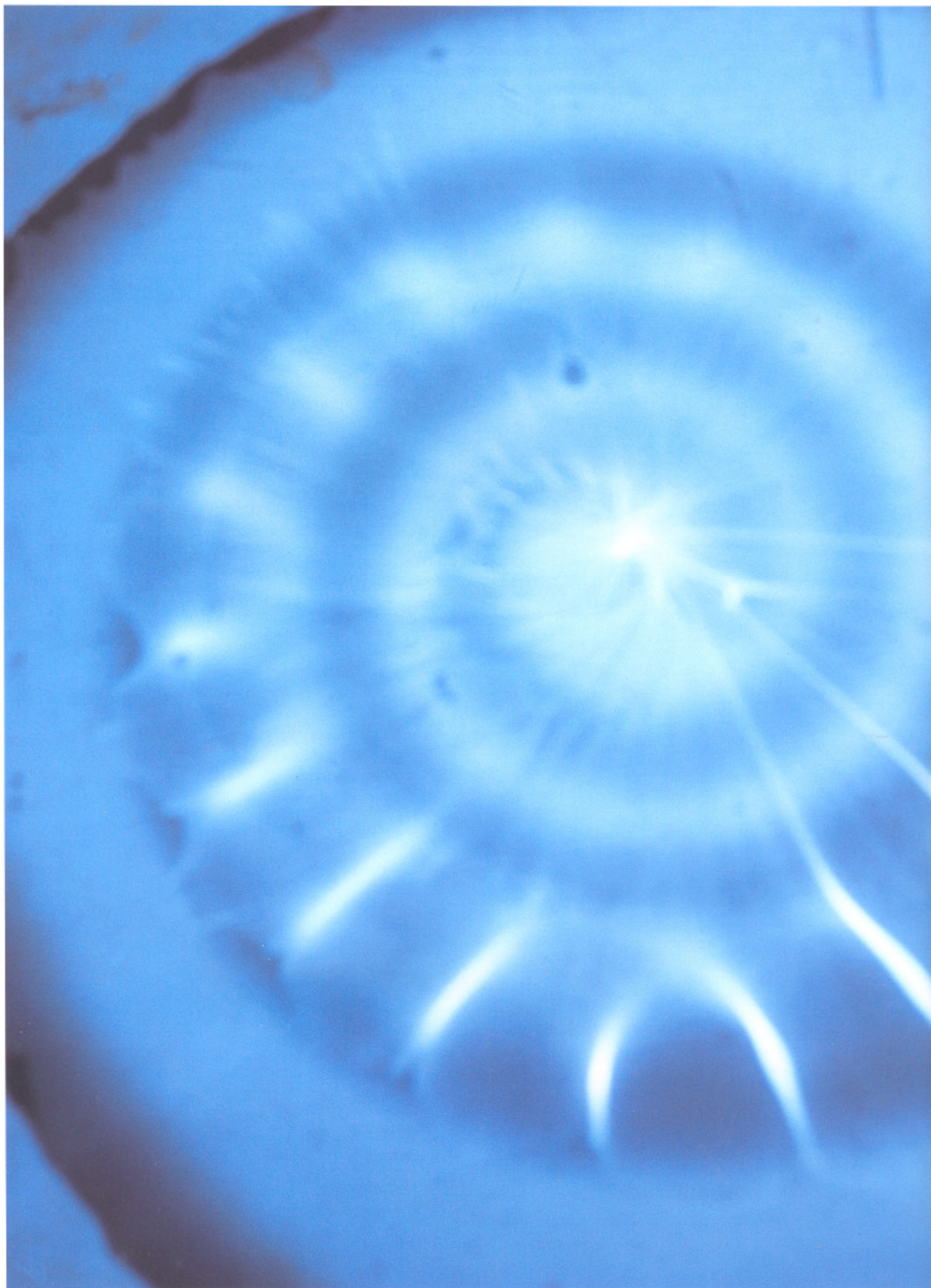
Cabinets

It doesn't just look good. B&W cabinets are curvy for a very good reason – the same reason why seashells are round and wheels don't have corners. Continuous curves are better at bearing high pressures and forces than surfaces with edges, or discontinuities. They spread stresses evenly across their plane, rather than directing them to potential weak points. It's a principle we've applied to speaker cabinets. A naturally strong, shell-like enclosure absorbs vibrations and shocks, preventing them from disturbing the stillness of the speaker's sensitive drive unit assemblies. You'll notice the difference, and not just with your eyes.



Bracing

Unshakable, that's how we like to think of our speakers. Maximum delivery, minimum vibration. Inside the cabinets of many of our larger models you'll find a system of strategically-positioned, interlocking panels that brace the walls of the speaker like the ribs of a ship's hull. Panel resonances are restrained, allowing you to push the volume as high as you want. With this extra stiffening in the speaker, you can enjoy bass with a bit more backbone.





Nautilus™





Midnight Blue

Black

Silver

Nautilus™ is our touchstone: the result of a groundbreaking, five-year research and development mission to achieve, as near as possible, the perfect loudspeaker. The things we learnt by developing something so new, so different and so uncompromised have become our own rules for speaker design, and have informed every range we've created since. That's down to advances in materials, crossover components and cabling, and to its pioneering use of tapering tubes in place of the conventional box cabinet.



What you hear from Nautilus™ is as different from ordinary speakers as what you see. Its shape and sound were created by straight and spiralling tapered tubes filled with absorbent wadding, designed to soak up wayward sound waves from the back of each drive unit and allow the sound from the front to reach you in as pure a state as you're ever likely to hear. In form and performance, Nautilus™ was and still is revolutionary.





800 Series

It's the choice of studios like Abbey Road. And it's the definitive B&W collection. The B&W 800 Series takes technological advances made by Nautilus™ such as the tube-loaded tweeter and sphere-and-tube midrange enclosure, and applies them across a comprehensive range of finely tuned and impeccably crafted speakers. From full, three-way systems featuring our diamond dome tweeter to a bookshelf speaker, a centre speaker and a subwoofer, the 800 Series delivers quality that even experienced professionals cannot fault.



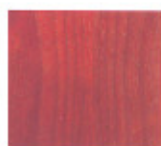
To view full range please see the specification section at the end of the brochure.



Black Ash



Cherrywood



Rosenut



800◄

The top-of-the-range model incorporates all of the 800 Series core technologies. An FST™ midrange driver and diamond dome tweeter in the top-of-the-range 800 to reveal astonishing detail. The Marlan™ midrange 'head' enclosure and the separate tweeter on top to project an uncannily realistic sound image. And twin 250mm (10 in) diameter Rohacell® sandwich cone woofers, delivering formidable bass with ease.



802◄

A slimmer sibling to the 800, ideal for listeners who value the detail and imaging of the larger system, but prefer a more compact aspect. The layout of the midrange and diamond dome tweeter layout is identical, but the twin 200mm (8 in) bass drivers are housed in a narrower cabinet. Despite its smaller volume, the 802 yields surprisingly little in terms of bass extension.



803◄

The 803 brings diamond dome technology to a less technical looking piece of furniture than the larger 'headed' models. The FST™ midrange driver is housed in its own isolated section of the slim, beautifully curved, Matrix™-braced main cabinet. Three 180mm (7 in) Rohacell® cone bass drivers, supplemented by a front-firing Flowport™, deliver bass output on a par with the 802.



805◄

800 Series quality for the smaller listening room. The 805 is a compact stand-mount 2-way system that makes its presence felt with a surprisingly full sound for its size but won't intrude into the room.



HTM2◄

A full three-way centre speaker that puts you right in the middle of the action, with diamond dome tweeter, FST™ midrange, a pair of booming 180mm (7 in) Rohacell® bass drivers and magnetic-shielding for positioning close to the screen.



ASW855

A subwoofer to handle the most demanding material in the largest rooms without breaking a sweat, thanks to a 390mm (15 in) Rohacell® long throw cone and Matrix™-reinforced cabinet.

700 Series

The 700 Series from Bowers & Wilkins offers the perfect upgrade for audiophiles looking for maximum substance and subtlety from their speakers. They represent everything that's best about B&W: world-beating Nautilus™ technologies delivering matchless sound from contemporary, computer-modelled, handcrafted cabinets. The fine lines and exquisite real wood veneers of the cabinets reflect the level of detail in the sound they produce. You'll discover new subtleties in music you thought you knew, and experience surround sound of gripping realism and power.



To view full range please see the specification section at the end of the brochure.



Black Ash



Cherrywood



Rosenut



Walnut



Maple



703

The larger of the 700 Series floorstanders, the three-way 703 harnesses the full potential of our core technologies, including a dedicated FST™ Kevlar® cone for the sharpest midrange performance.



704

The 704 floorstander adds a bass-only driver to the two-way configuration of the 705, generating the extra power needed for larger rooms. A superb all-rounder.



705

700 Series engineering and design – including the sloping, one-piece, tweeter-enhancing front and top baffle – in a compact form, for either stand or shelf-mounting.



DS7

A surround speaker, switchable between 'normal', monopole mode and dipole mode, which creates a more all-enveloping ambient sound, balanced across a wider area, for a true movie theatre experience.



HTM7

A centre channel speaker using the same driver line-up as the 705 and timbre-matched to be part of a high quality, 700 Series-based home theatre installation.



ASW750

To feel the true acoustic of any recorded environment, whether it's a concert hall or battlefield, add the ASW700 subwoofer. The ultra-low bass from its 12" driver and 1000W amp will add a whole new level to your home cinema experience.

CM Series

Our CM Series is something of a wolf in sheep's clothing. Its classic cabinet shapes, drive unit arrangements and handsome real wood veneers might lead you to expect a correspondingly conventional sound quality. If so, you'd be in for a shock. The sound of the CM Series is as full, crisp and startlingly true-to-life as you'd expect from a more high-end speaker range. That's because it possesses technologies, design innovations and performance that were first heard in top, studio quality ranges such as the B&W 800 Series. The physical familiarity of the CM1 bookshelf, CM7 floorstander and CM Centre only underlines just how far Bowers

& Wilkins has brought sound reproduction in recent years. You probably wouldn't anticipate, for example, that the speakers of the CM Series include minimalist first-order crossovers whose electrical simplicity is an indication of the quality and balance of the speakers' mechanical design. All three boast B&W's Nautilus™ tube-loaded tweeter, our trademark yellow Kevlar® midrange or bass/midrange unit, and Flowport® our low-turbulence speaker vent. For hi-fi or home theatre, if you want speakers with some unexpected bite, try our wolves in sheep's clothing.





Wenge



Rosenuit



Maple



CM7

Three-way floor-standing speakers have a reputation for being difficult to design successfully. But not the CM7. Thanks to four decades of B&W engineering experience, and technology developed in tandem with our 800 Series, the CM7 respects no such reputation. The CM7 is a superbly accurate and revealing wide-bandwidth speaker system.



CM1

The CM1 is a classic, high-performance bookshelf monitor, re-clothed for the modern interior. The cabinet is finished in a choice of real wood veneers – Maple, Rosenuit or Wenge – and features a brushed aluminium baffle that provides an appropriately clean, contemporary frame for the Nautilus™ tube-loaded tweeter dome and ochre-coloured Kevlar® cone of the bass/midrange drive unit.



CM Centre

The home theatre centre channel speaker that thinks it's a hi-fi monitor. And it is. The CM Centre's symmetrically arranged driver line-up of twin 130mm Kevlar® cone bass/midrange units and a 25mm Nautilus™ tube-loaded aluminium tweeter are integrated by a minimalist, ear-tuned, first order network made possible by the remarkably wide bandwidth of the drivers. The CM Centre makes music as a seamless, cohesive whole, and displays a striking ability to resolve fine detail.

600 Series 3

For over a decade, B&W's 600 Series of hi-fi and home theatre speakers has represented outstanding value for money, recognised by numerous industry accolades. The technology – tube-loaded tweeter, Kevlar® bass/midrange driver with an open chassis, Flowport™ vent, Matrix™-style bracing – are an accumulation of pioneering B&W ideas, from Nautilus™ and earlier projects. The modern materials and cool, contemporary design create a distinct aesthetic for Series 3, the epitome of affordable, technically superior speaker ranges.



To view full range please see the specification section at the end of the brochure.



Black Ash

Light Oak Sorrento



DM604 S3

Suited to larger rooms, the imposing DM604 S3 is the full three-way system of the 600 Series. All the nuances and intensities of film sound and music are brought to life by the combination of a dedicated Kevlar® cone midrange driver, housed in its own isolated chamber, and twin 180mm (7 in) aluminium cone bass drivers delivers.



DM 603 S3

A versatile, slimline speaker designed for medium to large rooms, the floorstanding DM603 S3 adds a bass-only driver to the DM601 S3 configuration, taking much of the load off the Kevlar® bass/midrange unit and adding to the clarity and power handling of the system.



DM601 S3

An acknowledged star of speaker design, the DM601 S3 bookshelf monitor brings together a host of trademark B&W technologies in one compact, multi-purpose package. It combines a 165mm (6½-in) woven Kevlar® cone bass/midrange driver, a Nautilus™ tube-loaded tweeter, internal bracing for reduced coloration and Flowport™ for clean, punchy bass.



LCR60 S3

Ultra-flexible, thanks to its symmetrical design, twin bass/midrange drivers and magnetic shielding, the LCR60 S3 can be laid horizontally to fill the centre speaker role in a home theatre set-up, or stood upright in the front left and right positions.



DS6 S3

A versatile, wall-mounted surround speaker for use in a variety of room settings, the DS6 S3 is switchable between "normal", monopole mode and dipole mode, which creates a wider, more all-enveloping ambient sound, for a true movie theatre-style experience.



ASW675

A powerful yet compact subwoofer to add extra weight to the sound of music or movies. The long throw of the 250mm (10 in) composite paper-Kevlar®-aluminium cone allows it to move the large volumes of air needed for accurate, punchy bass. An audiophile-standard 500W amplifier applies the necessary equalisation for the compact cabinet.

300 Series

We didn't want the engineers that brought Nautilus™ into being to abandon all they had learned when they set about designing our more affordable ranges. If anything, the 300 Series overturned as many conventions when it appeared as Nautilus™ did, by narrowing the gap between what many of us aspire to in our home entertainment systems and what we are able to

spend. Where rival ranges make sacrifices, the 300 Series refuses to compromise. Equipped with ultra-sharp, Nautilus™-derived tube-loaded tweeters, Flowport™ vents, audiophile-quality crossovers and solid, stylish construction, the 300 Series is the perfect introduction to B&W's world of superior sound.





Black Ash



Maple



DM303

A two-way speaker, equally at home with two-channel stereo or as a front left/right or surround speaker in a home theatre set-up. The tube-loaded tweeter's cleaner, more focused, more natural sound is a step up from rivals in this price range, while the Flowport™ at the rear reduces bass-induced 'chuffing' noise to negligible levels.



LCR3

The LCR3's magnetic shielding and symmetrical layout makes it a great choice as a centre speaker in a home theatre setting, placed horizontally above or below the TV, and/or standing upright in front left/right positions. Its technological kinship with the DM303 – tube-loaded tweeter, glass-fibre bass/midrange cones – means the two models can be used seamlessly in the same system.



ASW300

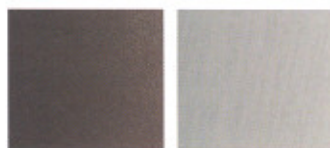
A compact active subwoofer to deliver an extra kick to your 300 Series system. Featuring a 200mm (8 in) paper/Kevlar® cone, an internal 100W amplifier and down-firing Flowport™ to minimise turbulence noise, the ASW300 is more than powerful enough for small to medium-sized rooms, and offers a choice of equalisation, allowing the response to be tailored to your specific setting.

XT Series

If you're looking for audiophile performance and cultured, contemporary design to match, cast your eye over the XT Series: speakers for two-channel or home theatre use that encase leading-edge acoustic engineering in slimline, satin-polished aluminium cabinets. The naturally strong, curved enclosures don't just look good; they absorb vibrations and shield the drive

unit assemblies from disturbances. All models incorporate tube-loaded aluminium dome tweeters and our trademark bass/midrange drivers woven from ochre-coloured Kevlar®. So good are the drive units that we need only the simplest crossovers with the fewest handpicked components to preserve the signal's purity.





Gloss black

Silver grey



XT4

This full three-way speaker features our tube-loaded Nautilus™ tweeter mounted on top of the cabinet for unrivalled clarity, a Kevlar® cone bass/midrange driver, and twin five inch paper/Kevlar® bass cones, delivering remarkably extended low frequency performance from the speaker's slim profile. The XT4 benefits from a first-order crossover between the midrange and tweeter, first employed in the 800 Series.



XT2

The XT2 is a compact, two-way system offering outstanding performance for a smaller room. Perching the tube-loaded Nautilus™ tweeter on top, as in the XT4, helps to eliminate the time-smearing of the tweeter signal that accompanies its traditional position in the main cabinet. Setting it back a little, with its acoustic centre aligned with that of the midrange, gives a clearer, freer and more lifelike three-dimensional sound image.



XTC

The aptly-named XTC will help you create home theatre sound to take your breath away. A two-way system designed primarily for centre speaker use, featuring twin Kevlar® cone bass/midrange units either side of a Nautilus™ tube-loaded tweeter, it can be teamed up with XT4s or XT2s in satellite positions to stunning effect.



PV1

Why not couple a PV1, our rock-solid compact subwoofer, with an XT audio or home theatre system, for deep bass from a small space?

Flat Panel Monitors

Designed with a minimalist sensibility, B&W's Flat Panel Monitors possess a poise and elegance all too rare in high-end home cinema and audio components. Just as flat plasma and LCD TV screens offer high resolution, distortion-free images from an ultra-slimline frame, FPMs deliver superlative sound with minimal interference to the room's decor and traffic. Dimensioned to precisely match different sizes of flat screen, and as slim as the thinnest plasma display, their visual and physical presence has been reduced to a bare minimum. The listening experience, however, has lost nothing.





Black

Silver



FPM2

The FPM2 complements the other FPM models as a compact surround speaker, but is equally at home with two-channel audio in small rooms. Ultra-slim, it can be mounted flat or at an angle against a wall, or stand freely on a shelf or table.



FPM6

60inch screen



FPM5

50inch screen



FPM4

42inch screen

FPM4, FPM5 and FPM6

Flat Panel Monitors are inspired by developments in TV screen technology. Their forms and dimensions follow those of standard flat plasma and LCD TV screens without any compromise to B&W's sound quality. Three models - FPM4, FPM5 and FPM6 - correspond to three different screen sizes, come in a choice of frame colours, and can be mounted on a wall or tabletop. Alternatively, matching floorstands, one for the FPM 4 and FPM 5 (shown here), and one for the FPM 6, offer a solid, elegant mount, and allow cables to be concealed in a channel at the rear.



PV1

Why not couple a PV1, our rock-solid compact subwoofer, with an FPM audio or home theatre system, for deep bass from a small space?

VM6

There are two ways you can look at B&W's new VM6 speaker (and we don't just mean vertically and horizontally). The first is to see it as a high quality speaker that's been designed specifically to partner the new generation of flat-panel televisions. The other way is to think of it as a speaker that flat-panel TVs finally deserve to line up alongside. It's taken a while but the picture quality of the best LCD and plasma screens has only recently come close to matching the quality of sound from B&W speakers. The VM6 delivers

cinema sound so crisp and lifelike, you'll feel like you're in the midst of the action. Even as a pair in a stereo music arrangement, VM6s bring music to life so vividly that, just by closing your eyes, you'll feel part of the band or orchestra. On the outside, the VM6's soft, rounded profiles make it a natural partner for the latest flat-panel TVs. The advanced technologies on the inside make it a match for the most demanding movies and music.





Black Silver White



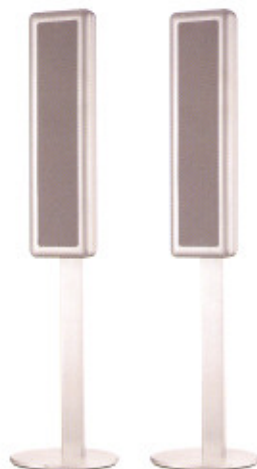
Create a high quality home theatre installation for medium-sized to larger rooms by deploying VM6s in 5.1 configuration with a PV1 subwoofer, whose 500W ICEpower® amplifier and back-to-back 8" drivers will complete a truly cinema-sized sound.

Recommended systems

Equipped with B&W's trademark Kevlar® bass/midrange drive unit and a tweeter that can reach far higher than human hearing, the VM6 is an outstanding multipurpose speaker. Occupying all five positions in a home theatre set-up, it will bring the action right into your living room. In a stereo installation, with or without a subwoofer, it will add extra dynamism and presence to your music, too.



For sound that combines power, precision and the warmth of the original performance, match two VM6s with B&W's sensational PV1 subwoofer for a simple 2.1 home cinema configuration. The VM6 superb imaging and projection will still create a truly cinematic sound.



For music purposes in a traditional hi-fi system, a lone pair of VM6s will create a vivid stereo image and offer all the bass extension and detail you need to experience your favourite music afresh.

V VM1

The slimline VM1 takes a new angle on speaker design, literally. We understand that, particularly in home theatre set-ups, speakers might have to be in up positions in the middle of a room. The VM1's sleek, contemporary styling extends all the way around the cabinet, front, back and sides. At the rear, the Flowport™ vent and connections are seamlessly integrated into the speaker. So, no matter where you put it, on its bookshelf stand, floor stand or wall bracket, the VM1 will look – and sound – part from any vantage point.





AS1 and AS2

Both sharing the VM1's aesthetic, the AS1 and AS2 subwoofers are ideally suited to providing deep bass extension for your system. The AS1 features an 85W amplifier and 165mm (6½ in) driver with magnetic shielding. The more powerful AS2 houses a 150W amp, a 250mm (10 in) Mica cone driver, and our Bass Overload Suppression System circuitry.

Magnetically-shielded to prevent interference with the TV signal, the VM1 can be used in two-channel audio systems or five-channel home theatre set-ups. It can be mounted vertically on its swivelling wall bracket or stand, or horizontally on a supplied foot. This flexibility, and the speaker's excellent all-round performance, means that the VM1 is able to occupy all five positions in a visually consistent home theatre installation.



v LM1

Curvy, colourful and cute: three words rarely associated with the average loudspeaker. But then, you could hardly call the LM1 average. Designed to fit easily with your lifestyle and interior design needs, it's the seriously fun way to enhance the sounds that add so much to life. Just choose from our range of four delicious colours, then sit back and let the music play. Will it be Pearl White for the minimalist in you? Black to satisfy your traditional side? Turquoise to make the subtlest of style statements? Or maybe Silver to match the LM1's sparkling sound performance? Decisions, decisions...





Black

Silver

White



Optional stand

The LM1's ingenious ball joint connection allows the speaker to rotate and swivel towards wherever you're listening. The joint connects the cabinet either to the flat mounting plate or, if it's really showing off, to the optional minimalist floor stand.



LM1

This is a speaker that's eager to please. Thanks to its cunning cast-metal mounting plate and swivelling ball joint combination, the LM1 can be placed on or fixed to any surface – desk, shelf, wall, ceiling – and turn to face in any direction. Its high-strength, internally reinforced, polypropylene body and weather-resistant design means you can even enjoy your favourite sounds in the bathroom or undercover outdoors.

Mini Theatre Series

A movie is only great if it adds up to more than the sum of its parts. We felt we should keep that in mind when we designed our most compact loudspeaker for home theatre, the M-1. From the inside out, the M-1 has been conceived as a unified system delivering superlative sound, looks and ease of use. Starting on a blank sheet of paper, its design has evolved in a totally integrated way, from the custom-made cross-grained and woven bass driver cone to the two-piece clamshell cabinet and concealed cabling. It's a sum of parts that makes for great home cine-





Black Silver White

Recommended systems

The M-1 is an exceptional multi-purpose speaker, designed to handle a wide band of frequencies, right up to 28kHz, out of the range of human hearing. It is more than capable of filling all five positions in a home theatre installation. Anchor this quintet with the bass from a B&W subwoofer, and you'll experience movie sound to keep you gripped, right to the final frame. Every whisper, rustle, creak, crunch, and crash of your favourite movies will seem like new once again.

M-1s can be bought individually, so they can be used in pairs for two-channel audio, too. Or you can pick up a box of five for a 5.1 home theatre set-up, with four set up vertically as your front and rear side speakers, and one as the horizontal front centre monitor. It's a much more adaptable set-up than the system-in-a-box approach. With M-1s in all five positions, your installation is future-proof: when you want to upgrade to a 6.1 or 7.1 set-up, just add one or two extra M-1s.

There are three subwoofers we'd recommend teaming up with your M-1s. Each offers a different level of bass extension and control for different needs and settings. And, in a system alongside M-1s, each one will add an extra dimension to the movies you love.



MT-10

For smaller rooms, a set-up of five M-1s, possibly wall-mounted, and B&W's AS1 subwoofer offers the right balance of power and performance. The AS1 features an 85W amplifier, a 6.5" driver and a music/movie mode switch.



MT-20

For the average-sized listening room, a sound option is to position table plinth-mounted M-1s on shelves and furniture, and bring in the bass from a new AS2 subwoofer, featuring a 10" mica long-throw driver, a 150W amp and advanced control functions.



MT-30

For the ultimate, large room, M-1-based home theatre installation, mount the four front and rear side speakers on floor stands. Incorporate the visually and acoustically unique PV1 subwoofer, which shares the same design approach as the M-1 and develops some serious bass power from its 500W IcePower® amplifier and back-to-back 8" drivers.





Gloss black with
anthracite trim

Gloss silver with
grey trim

Gloss white with
chrome trim



When we decided to create a new, powerful, compact subwoofer for use in home theatre or two-channel set-ups, we weren't going to contradict nature. Instead of a box, we based it on a bubble: the natural way of containing internal pressures without resorting to corners and edges.

It's a beautiful solution to the problems that plague conventional subwoofers. In the PV1, the tremendous air pressures that stress the panels of normal, flat-sided subs at higher output levels are dispersed evenly around a rigid, continuous shell, reducing unwanted vibrations to a bare minimum.

The PV1's added stability means it can be pushed just that bit further. The symmetrical mounting of its twin drive units keeps the subwoofer perfectly balanced and anchored to the floor. So there's no rattle when it rumbles. The back-to-back arrangement also further improves the distribution of pressure inside the speaker. Coupled to 500W of ICEpower® amplification, the drivers have the dynamics and control to deliver all a subwoofer should. A group of simple controls allow you to tailor the PV1's output precisely to your needs and those of your system.

All you hear is unimpaired bass that expands and deepens every listening experience. A big sound from a small bubble.



Weather Monitors

Almost everything is more fun in the fresh air. So it's a sorry state of affairs when the only places we can enjoy our top tunes are in the house or in the car. B&W has the answer: a range of hardwearing, waterproof speakers that bring superb quality sound to gardens, balconies, patios and poolside. Equipped with woven fibreglass bass, midrange cones and Nautilus™-derived tweeters, all three Weatherproof Monitors will deliver a crisp stereo image across a surprisingly wide area. Whatever the weather, you won't want to come inside.





Black

White



WM6

The top-of-the-range WM6 is a versatile solution for outdoor settings needing a more extended bass response and higher output. The larger cabinet of the WM6 houses a 160mm (6.5 in) bass/midrange driver cone and a Nautilus™ tube-loaded tweeter. The cabinet includes an innovative 'J port' vent, which allows fully extended bass out but stops rainwater getting in.

WM4

The WM4's more compact cabinet houses a 130mm (5 in) bass/midrange driver and a Nautilus™ tube-loaded tweeter. As with the other models, the WM4's corrosion-proof materials and self-draining 'J port' resist the elements. And, in line with the WM6, the WM4's wall bracket allows it to be angled in both vertical and horizontal directions.



WM2

The WM2 uses the same sized cabinet and bass/midrange driver as the WM4. The 130mm (5 in) unit crosses over to an Ultra 12 tweeter for high frequencies. An integral wall bracket allows rotation in one plane and has keyhole fixings to allow mounting in either vertical or horizontal orientation.



Custom Installation Series

Of course, we understand if you don't want to see your speakers at all, and that all you're asking for is the best speaker sound money can buy. Our Custom Installation Series offers a wide range of alternative models for audio or home theatre that can all be fitted (by an authorised B&W custom installer) flush into walls and ceilings. The only visible evidence is the speaker's slimline grille and frame, which can be painted over or covered to disappear into the surroundings. See nothing, but hear everything.



To view full range please see the specification section at the end of the brochure.



Signature 8NT

A serious three-way system drawing heavily on 800 Series technologies, the Signature 8NT is the reference for in-wall speakers. Its twin bass drivers with die-cast chassis, FST™ midrange driver and Nautilus™ tube-loaded tweeter deliver stunning sound for two-channel audio or multichannel home theatre.



CWM 6260

The in-wall CWM 6260's adjustable level soft dome tweeter brings smoother and more detailed high frequency performance to a package that also includes a woven fibreglass 165mm (6½ in) bass/midrange driver and three-position switchable high frequency equalisation. An integrated swing-out dog fixing chassis and optional back box reduce sound bleed to adjoining rooms and define the bass/midrange driver's working volume.



CDS6 S3

For cinema-like surround sound that seems to seep from the walls, nothing comes close to the easy-to-install CDS6 S3. With the ability to switch between conventional monopole operation and all-enveloping, auditorium-style dipole mode, you can choose whichever type of sound experience best suits the room, the material and the size of audience.



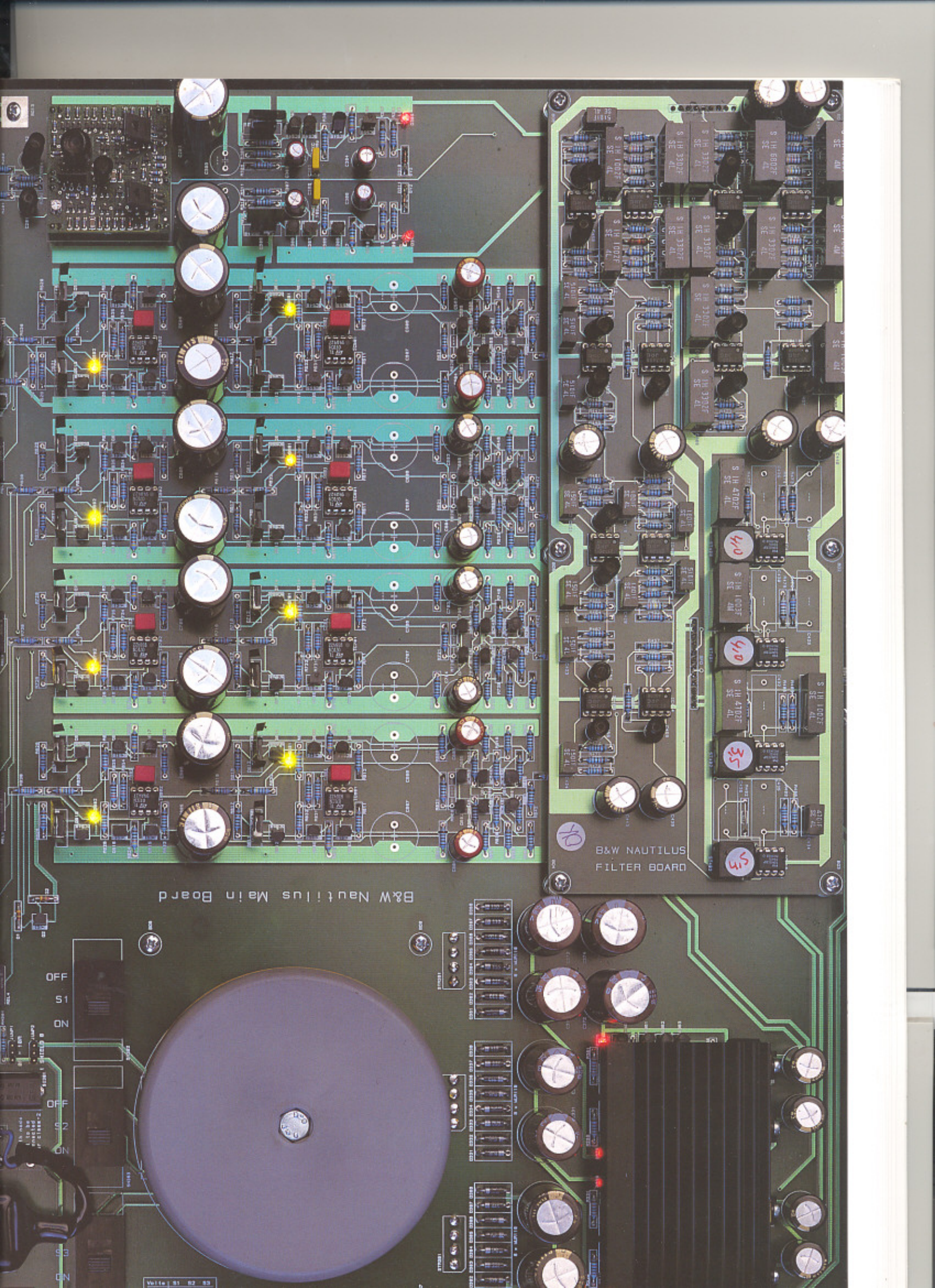
CCM 817

Equipped with a woven Kevlar® cone 180mm (7 in) bass/midrange driver and an offset Nautilus™ tube-loaded tweeter, the CCM 817 achieves a level of sound quality previously unknown for a ceiling speaker. It combines its extraordinary performance with an integrated tilt chassis that enables orientation with the listening position.



CCM 746S

Two channels of sound through one speaker? The CCM 746S can handle it, offering the option of installing just one ceiling speaker instead of a pair. Twin voice coils behind the 165mm (6½ in) Kevlar® cone bass/midrange driver, allied to a pair of offset aluminium dome tweeters, combine the stereo signal through just the single installed unit.



B&W Nautilus Main Board

B&W NAUTILUS
FILTER BOARD

S 1H 1000F
SE AL
40

S 1H 1000F
SE 2H
40

S 1H 4700F
SE AL
35

S 1H 4700F
SE AL
35

S 1H 1000F
SE AL
S 1H 3300F
SE AL
S 1H 3300F
SE AL
S 1H 3300F
SE AL
S 1H 6800F
SE AL








OFF S1 ON
OFF S2 ON
OFF S3 ON

Volts 01 02 03






Model	Nautilus™
Features	Nautilus™ tube loading Active crossover
Description	4-way tube-loaded loudspeaker system
Drive units	1x 300mm (12 in) aluminium cone bass 1x 100mm (4 in) aluminium/polymer sandwich cone lower midrange 1x 50mm (2 in) aluminium dome upper midrange 1x 25mm (1 in) aluminium dome high-frequency
Frequency range	-6dB at 10Hz and 25kHz
Dispersion	Within 2dB of response on reference axis Horizontal: over 60° arc Vertical: over 10° arc
Crossover frequency	220Hz, 880Hz, 3.5kHz
Power amplifier requirements	4 channels per speaker, rated 100W-300W continuous into 8Ω on unclipped programme (each channel to have identical gain and phase)
Dimensions	Height: 1210mm (47.6 in) Width: 430mm (16.9 in) Depth: 1105mm (43.5 in)
Net weight	Speaker: 44.5kg (98 lb) Plinth: 42kg (92 lb) Total: 86.5kg (190 lb)
Standard finishes	Midnight Blue, Black, Silver



800 Series

	800D	801D	802D	803D	803S	804S	805S
Description	3-way vented-box system	3-way vented-box system	3-way vented-box system	3-way vented-box system	3-way vented-box system	3-way vented-box system	2-way vented-box system
Drive Units	1x ø25mm (1 in) diamond dome high-frequency 1x ø150mm (6 in) woven Kevlar® cone FST midrange 2x ø250mm (10 in) Rohacell® cone bass	1x ø25mm (1 in) diamond dome high-frequency 1x ø150mm (6 in) woven Kevlar® cone FST midrange 1x ø390mm (15 in) Rohacell® cone bass	1x ø25mm (1 in) diamond dome high-frequency 1x ø150mm (6 in) woven Kevlar® cone FST midrange 2x ø200mm (8 in) Rohacell® cone bass	1x ø25mm (1 in) diamond dome high-frequency 1x ø150mm (6 in) woven Kevlar® cone FST midrange 3x ø180mm (7 in) Rohacell® cone bass	1x ø25mm (1 in) aluminium dome high-frequency 1x ø150mm (6 in) woven Kevlar® cone FST midrange 2x ø180mm (8 in) Rohacell® cone bass	1x ø25mm (1 in) aluminium dome high-frequency 1x ø150mm (6 in) woven Kevlar® cone FST midrange 2x ø165mm (6.5 in) Rohacell® cone bass	1x ø25mm (1 in) aluminium dome high-frequency 1x ø165mm (6.5 in) woven Kevlar® cone bass/midrange
Frequency Range(-6dB)	25Hz and 33kHz	23Hz and 33kHz	27Hz and 33kHz	28Hz and 33kHz	28Hz and 50kHz	30Hz and 50kHz	42Hz and 50kHz
Power handling	1000W	1000W	500W	375W	200W	200W	120W
Sensitivity	90dB spl (2.83V, 1m)	90dB spl (2.83V, 1m)	90dB spl (2.83V, 1m)	90dB spl (2.83V, 1m)	90dB spl (2.83V, 1m)	90dB spl (2.83V, 1m)	88dB spl (2.83V, 1m)
Impedance	8Ω (minimum 3.1Ω)	8Ω (minimum 3.5Ω)	8Ω (minimum 3.5Ω)	8Ω (minimum 3Ω)	8Ω (minimum 3Ω)	8Ω (minimum 3Ω)	8Ω (minimum 3.7Ω)
Dimensions	Height 1180mm (46.5 in) no feet Width 450mm (17.7 in) Depth 645mm (25.4 in)	Height 1182mm (46.9 in) no feet Width 450mm (17.9 in) Depth 682mm (26.9 in)	Height 1135mm (44.7 in) no feet Width 368mm (14.5 in) Depth 563mm (22.2 in)	Height 1164mm (45.8 in) no feet Width 368mm (14.5 in) Depth 457mm (18 in)	Height 1063mm (41.9 in) no feet Width 291mm (11.5 in) Depth 433mm (17 in)	Height 1020mm (40.2 in) no feet Width 238mm (9.4 in) Depth 351mm (13.8 in)	Height 418mm (16.5 in) Width 238mm (9.4 in) Depth 351mm (13.8 in)
Weight	125kg (275 lb)	118kg (260 lb)	80kg (176 lb)	45kg (98 lb)	41kg (90 lb)	28kg (62 lb)	11.5kg (26 lb)
							

700 Series

	703	704	705	DS7	HTM7
Description	3-way vented-box system	2½-way vented-box system	2-way vented-box system	Switchable dipole/monopole surround system	2-way magnetically shielded vented box system
Drive Units	1x ø25mm (1 in) alloy dome high-frequency 2x ø165mm (6.5 in) Paper/Kevlar® cone bass 1x ø160mm (6 in) woven Kevlar® cone FST midrange	1x ø25mm (1 in) alloy dome high-frequency 1x ø165mm (6.5 in) Paper/Kevlar® cone bass 1x ø165mm (6.5 in) woven Kevlar® cone bass/midrange	1x ø25mm (1 in) alloy dome high-frequency 1x ø165mm (6.5 in) woven Kevlar® cone bass/midrange	1x ø25mm (1 in) alloy dome high-frequency 2x ø100mm (4 in) midrange/high-frequency 1x ø165mm (6.5 in) woven Kevlar® cone bass/midrange	1x ø25mm (1 in) alloy dome high-frequency 1x ø165mm (6.5 in) woven Kevlar® cone bass/midrange
Frequency Range(-6dB)	30Hz and 50kHz	30Hz and 50kHz	43Hz and 50kHz	60Hz & 42kHz (monopole) 60Hz & 15kHz (dipole)	48Hz and 50kHz
Power handling	200W	150W	120W	120W	120W
Sensitivity	90dB spl (2.83V, 1m)	90dB spl (2.83V, 1m)	89dB spl (2.83V, 1m)	89dB spl (2.83V, 1m)	91dB spl (2.83V, 1m)
Impedance	8Ω (minimum 3Ω)	8Ω (minimum 4.1Ω)	8Ω (minimum 4.6Ω)	8Ω (minimum 3Ω)	8Ω (minimum 4.6Ω)
Dimensions	Height 1007mm (39.7 in) Width 232mm (9.1 in) Depth 357mm (14.1 in)	Height 957mm (37.7 in) Width 222mm (8.7 in) Depth 319mm (12.6 in)	Height 421mm (16.6 in) Width 222mm (8.7 in) Depth 319mm (12.6 in)	Height 302mm (11.9 in) Width 383mm (15.1 in) Depth 165mm (6.5 in)	Height 306mm (12.1 in) Width 450mm (17.7 in) Depth 289mm (11.4 in)
Weight	27kg (60 lb)	21kg (46 lb)	9.5kg (21 lb)	8.5kg (19 lb)	12.5kg (28 lb)
					

600 Series

	604 S3	603 S3	602.5 S3	602 S3	601 S3	600 S3
Description	3-way vented-box system	2½-way vented-box system	2-way vented-box system	2-way vented-box system	2-way vented-box system	2-way vented-box system
Drive Units	1x ø25mm (1 in) alloy dome high-frequency 1x ø180mm (7 in) woven Kevlar® cone midrange 2x ø180mm (7 in) Aluminium cone bass	1x ø25mm (1 in) alloy dome high-frequency 1x ø165mm (6.5 in) woven Kevlar® cone bass/midrange 1x ø165mm (6.5 in) Aluminium cone bass	1x ø25mm (1 in) alloy dome high-frequency 1x ø165mm (6.5 in) woven Kevlar® cone bass/midrange	1x ø25mm (1 in) alloy dome high-frequency 1x ø180mm (7 in) woven Kevlar® cone bass/midrange	1x ø25mm (1 in) alloy dome high-frequency 1x ø165mm (6.5 in) woven Kevlar® cone bass/midrange	1x ø25mm (1 in) alloy dome high-frequency 1x ø130mm (5 in) woven Kevlar® cone bass/midrange
Frequency Range(-6dB)	30Hz and 42kHz	34Hz and 42kHz	40Hz and 42kHz	40Hz and 42kHz	48Hz and 42kHz	55Hz and 42kHz
Power handling	200W	150W	100W	120W	100W	100W
Sensitivity	90dB spl (2.83V, 1m)	90dB spl (2.83V, 1m)	88dB spl (2.83V, 1m)	90dB spl (2.83V, 1m)	88dB spl (2.83V, 1m)	88dB spl (2.83V, 1m)
Impedance	8Ω (minimum 3Ω)	8Ω (minimum 3Ω)	8Ω (minimum 3Ω)	8Ω (minimum 3Ω)	8Ω (minimum 3Ω)	8Ω (minimum 3Ω)
Dimensions	Height 994mm (39.1 in) Width 236mm (9.3 in) Depth 398mm (15.7 in)	Height 910mm (35.8 in) Width 204mm (8 in) Depth 287mm (11.3 in)	Height 850mm (33.5 in) Width 204mm (8 in) Depth 288mm (11.3 in)	Height 490mm (19.3 in) Width 236mm (9.3 in) Depth 293mm (11.5 in)	Height 365mm (14.4 in) Width 204mm (8 in) Depth 228mm (9 in)	Height 286mm (11.3 in) Width 175mm (6.9 in) Depth 219mm (8.6 in)
Weight	29.2kg (64.2 lb)	19.5kg (42.9 lb)	14.5kg (31.9 lb)	10.5kg (23.1 lb)	6.1kg (13.5 lb)	4.0kg (8.8 lb)
						

800 Series

HTM1D	HTM2D	HTM3S	HTM4S	SCMS	DS8S	ASW 825	ASW 855
3-way vented-box system	3-way vented-box system	3-way closed-box system	2-way vented-box system	2-way vented-box system	2-way closed-box selectable dipole/monopole system	Active closed-box subwoofer system	Active closed-box subwoofer system
1x ø25mm (1 in) diamond dome high-frequency 1x ø150mm (6 in) woven Kevlar® cone FST midrange 3x ø200mm (8 in) Rohacell® cone bass	1x ø25mm (1 in) diamond dome high-frequency 1x ø150mm (6 in) woven Kevlar® cone FST midrange 2x ø180mm (7 in) Rohacell® cone bass	1x ø25mm (1 in) aluminium dome high-frequency 1x ø150mm (6 in) woven Kevlar® cone FST midrange 2x ø185mm (6.5 in) Rohacell® cone bass	1x ø25mm (1 in) aluminium dome high-frequency 1x ø165mm (6.5 in) woven Kevlar® cone bass/midrange	1x ø25mm (1 in) aluminium dome high-frequency 1x ø165mm (6.5 in) woven Kevlar® cone bass/midrange	3x ø25mm (1 in) aluminium dome high-frequency 2x ø100mm (4 in) woven Kevlar® cone midrange 1x ø180mm (7 in) woven Kevlar® cone bass/midrange	1x ø300mm (12 in) Rohacell® cone long-throw	1x ø380mm (15 in) Rohacell® cone long-throw
32Hz and 33kHz	35Hz and 33kHz	35Hz and 50kHz	42Hz and 50kHz	48Hz and 50kHz	45Hz and 50kHz (monopole) 45Hz and 18kHz (dipole)	15Hz and 40/140Hz adjustable (EQ at A)	14Hz and 40/140Hz adjustable (EQ at A)
375W	250W	200W	120W	120W	120W	1000W (output)	1000W (output)
90dB spl (2.83V, 1m)	90dB spl (2.83V, 1m)	90dB spl (2.83V, 1m)	88dB spl (2.83V, 1m)	88dB spl (2.83V, 1m)	88dB spl (2.83V, 1m)	88dB spl (2.83V, 1m)	88dB spl (2.83V, 1m)
8Ω (minimum 3.7Ω)	8Ω (minimum 3.1Ω)	8Ω (minimum 3.2Ω)	8Ω (minimum 2.6Ω)	8Ω (minimum 4.7Ω)	8Ω (minimum 4.4Ω)		
585mm (23 in) no feet 974mm (38.3 in) 580mm (22.8 in)	329mm (13 in) no feet 841mm (33.1 in) 387mm (15.2 in)	320mm (12.6 in) no feet 783mm (30.8 in) 316mm (12.4 in)	279mm (11 in) no feet 486mm (19.1 in) 287mm (11.3 in)	389mm (15.7 in) 373mm (14.7 in) 219mm (8.6 in) not including wall bracket	360mm (14.2 in) 822mm (32.4 in) 205mm (8.1 in)	529mm (20.8 in) no feet 476mm (18.7 in) 351mm (13.8 in) including grille and controls	529mm (20.8 in) no feet 562mm (22.1 in) 522mm (20.6 in) including grille and controls
93kg (205 lb)	31kg (68 lb)	28kg (62 lb)	12.5kg (27 lb)	8.5kg (19 lb)	15kg (33 lb)	35kg (77 lb)	45kg (99 lb)



700 Series

	ASW 700	ASW 750
Description	Active closed-box subwoofer system	Active closed-box subwoofer system
Drive Units	1x ø250mm (10 in) paper/Kevlar® cone long-throw	1x ø300mm (12 in) paper/Kevlar® cone long-throw
Frequency Range(-6dB)	17Hz and 40/140Hz adjustable (EQ at A)	15Hz and 40/140Hz adjustable (EQ at A)
Power handling	500W (output)	1000W (output)
Dimensions	Height: 347mm (13.7 in) no feet Width: 340mm (13.5 in) Depth: 408mm (16.1 in) including grille and controls	Height: 437mm (17.2 in) no feet Width: 396mm (15.6 in) Depth: 479mm (18.9 in) including grille and controls
Weight	26.5kg (58 lb)	32kg (70 lb)



CM Series

	CM7	CM1	CM Centre
Description	3-way vented-box system	2-way vented-box system	2-way vented-box system
Drive Units	1x ø25mm (1 in) aluminium dome high-frequency 1x ø130mm (5 in) woven Kevlar® cone FST midrange 1x ø165mm (6.5 in) paper/Kevlar® cone bass	1x ø25mm (1 in) aluminium dome high-frequency 1x ø130mm (5 in) woven Kevlar® cone bass/midrange	1x ø25mm (1 in) aluminium dome high-frequency 2x ø130mm (5 in) woven Kevlar® cone bass/midrange
Frequency Range(-6dB)	34Hz and 50kHz	45Hz and 50kHz	45Hz and 50kHz
Power handling	150W	100W	120W
Sensitivity	88dB spl (2.83V, 1m)	84dB spl (2.83V, 1m)	85dB spl (2.83V, 1m)
Impedance	8Ω (minimum 3.0Ω)	8Ω (minimum 5.1Ω)	8Ω (minimum 4.3Ω)
Dimensions	Height: 910mm (35.8 in) no feet Width: 200mm (7.9 in) Depth: 300mm (11.8 in) including grille and terminals	Height: 280mm (11 in) Width: 165mm (6.5 in) Depth: 276mm (10.9 in) including grille and terminals	Height: 186.5mm (6.6 in) Width: 480mm (18.9 in) Depth: 275mm (10.8 in) including grille and terminals
Weight	20kg (44 lb)	6.7kg (14.7 lb)	7.5kg (16.5 lb)



600 Series

	LCR60 S3	LCR600 S3	DS6 S3	ASW600	ASW650	ASW675
Description	2½-way vented-box system	2½-way vented-box system	Switchable dipole/monopole surround system	Active closed-box subwoofer system	Active closed-box subwoofer system	Active closed-box subwoofer system
Drive Units	1x ø25mm (1 in) alloy dome high-frequency 2x ø130mm (5.5 in) woven/Kevlar® cone bass/midrange	1x ø25mm (1 in) alloy dome high-frequency 2x ø165mm (6.5 in) woven/Kevlar® cone bass/midrange	1x ø25mm (1 in) alloy dome high-frequency 2x ø80mm (3 in) midrange/high frequency 1x ø130mm (5 in) woven Kevlar®	1x ø250mm (10 in) paper/Kevlar® cone	1x ø300mm (12 in) paper/Kevlar® cone	1x ø250mm (10 in) composite aluminium/paper/Kevlar® cone long throw
Frequency Range(-6dB)	55Hz and 42kHz	48Hz and 42kHz	63Hz and 42kHz (monopole) 63Hz and 15kHz (dipole)	22Hz and 180Hz adjustable (EQ at A)	20Hz and 180Hz adjustable (EQ at A)	17Hz and 40/140Hz adjustable (EQ at A)
Power handling	120W	150W	100W	150W (output)	200W (output)	500W (output)
Sensitivity	88dB spl (2.83V, 1m)	89dB spl (2.83V, 1m)	89dB spl (2.83V, 1m)			
Impedance	8Ω (minimum 3Ω)	8Ω (minimum 3Ω)	8Ω (minimum 3.3Ω)			
Dimensions	Height: 175mm (6.9 in) Width: 460mm (18.1 in) Depth: 305mm (12.2 in)	Height: 204mm (8 in) Width: 545mm (21.5 in) Depth: 311mm (12.2 in)	Height: 249mm (9.8 in) Width: 380mm (15 in) Depth: 153mm (6 in)	Height: 365mm (14.4 in) no feet Width: 365mm (14.4 in) Depth: 450mm (17.7 in) including grille and controls	Height: 417mm (16.4 in) no feet Width: 415mm (16.3 in) Depth: 495mm (19.5 in) including grille and controls	Height: 340mm (13.4 in) no feet Width: 340mm (13.4 in) Depth: 411mm (16.2 in) including grille and controls
Weight	9.0kg (19.8 lb)	12.5kg (27.5 lb)	5.2kg (11.5 lb)	19.5kg (43 lb)	25.5kg (56 lb)	25.5kg (56.1 lb)



Custom Installation Series

	Sig 8NT	CWM 8180	CWM DS8	CWM LCR8	Sig 7NT	CWM LCR7
Description	3-way in-wall system	3-way in-wall system	3-way dipole/2-way monopole in-wall system	2½-way in-wall speaker system	2-way in-wall system	3-way in-wall system
Drive Units	1x ø25mm (1 in) Nautilus™ tube loaded aluminium dome high-frequency 1x ø130mm (5 in) FST woven Kevlar® cone mid 2x ø180mm (7 in) paper/ Kevlar® cone bass	1x ø25mm (1 in) Nautilus™ tube loaded aluminium dome high-frequency 1x ø130mm (5 in) Kevlar® cone FST midrange 1x ø200mm (8 in) Rohacell® cone bass	3x ø25mm (1 in) Nautilus™ tube loaded aluminium dome high-frequency 2x ø80mm (3 in) Kevlar® cone midrange 1x ø180mm (7 in) Kevlar® cone bass/midrange	1x ø25mm (1 in) Nautilus™ tube loaded aluminium dome high-frequency 2x ø130mm (5 in) woven Kevlar® cone bass/mid 2x ø130mm (5 in) aluminium cone bass	1x ø25mm (1 in) Nautilus™ tube loaded aluminium dome high-frequency 1x ø180mm (7 in) Kevlar® cone bass/midrange	1x ø25mm (1 in) Nautilus™ tube loaded aluminium dome high-frequency 3x ø100mm (4 in) mica cone bass 1x ø100mm (4 in) Kevlar® cone bass/midrange
Frequency Range (-6dB)	28Hz and 50kHz	35Hz and 50kHz	40Hz and 50kHz (monopole) 40Hz and 18kHz (dipole)	35Hz and 50kHz	35Hz and 50kHz	54Hz and 30kHz
Maximum Amp Power	200W	150W	150W	150W	150W	150W
Frame height	830mm (32.7 in)	524mm (20.6 in)	524mm (20.6 in)	708mm (27.9 in)	371mm (14.6 in)	625mm (24.6 in)
Frame width	258mm (10.2 in)	294mm (11.6 in)	294mm (11.6 in)	219mm (8.6 in)	225mm (10 in)	175mm (6.9 in)
Cut-out height	796mm (31.4 in)	485mm (19.1 in)	485mm (19.1 in)	668mm (26.3 in)	337mm (13.3 in)	600mm (23.6 in)
Cut-out width	228mm (8.9 in)	255mm (10 in)	255mm (10 in)	180mm (7.1 in)	220mm (8.7 in)	150mm (5.9 in)
Depth behind surface	99mm (3.9 in)	92mm (3.6 in)	87mm (3.4 in)	89mm (3.5 in)	98mm (3.8 in)	97mm (3.8 in)
Protrusion	5mm (0.2 in)	21mm (0.8 in)	21mm (0.8 in)	5mm (0.2 in)	3mm (0.1 in)	3.5mm (0.1 in)
Weight	10kg (22 lb)	8.3kg (18.2 lb)	5.7kg (12.5 lb)	8.0kg (17.6 lb)	3.0kg (6.6 lb)	4.2kg (9.3 lb)



Custom Installation Series

	CCM817	CCM80	CCM65	CCM50	CCM746S	CCM628	CCM618
Description	2-way in-ceiling system	2-way in-ceiling system	2-way in-ceiling system	2-way in-ceiling system	2-way dual channel in-ceiling system	2-way in-ceiling system	2-way in-ceiling system
Drive Units	1x ø25mm (1 in) Nautilus™ tube-loaded aluminium dome high-frequency 1x ø180mm (7 in) Kevlar® cone bass/midrange	1x ø25mm (1 in) aluminium dome, adjustable high-frequency angle 1x ø200mm (8 in) Kevlar® cone bass/midrange	1x ø25mm (1 in) aluminium dome, adjustable high-frequency angle 1x ø165mm (6.5 in) Kevlar® cone bass/midrange	1x ø25mm (1 in) Ultra 12 high-frequency 1x ø130mm (5 in) Kevlar® cone bass/midrange	2x ø25mm (1 in) aluminium dome high-frequency 1x ø165mm (6.5 in) Kevlar® cone bass/midrange	1x ø25mm (1 in) textile dome, adjustable high-frequency angle 1x ø200mm (8 in) glassfibre cone bass/midrange	1x ø25mm (1 in) Ultra 12 adjustable high-frequency angle 1x ø200mm (8 in) glassfibre cone bass/midrange
Frequency Range (-6dB)	40Hz and 50kHz	35Hz and 30kHz	45Hz and 30kHz	50Hz and 22kHz	40Hz and 22kHz	34Hz and 30kHz	35Hz and 22kHz
Maximum Amp Power	150W	150W	130W	100W	130W	150W	150W
Frame diameter	271mm (10.7 in)	280mm (11 in)	232mm (9.1 in)	201mm (7.9 in)	232mm (9.1 in)	280mm (11 in)	280mm (11 in)
Cut-out diameter	234mm (9.2 in)	254mm (10 in)	205mm (8.1 in)	175mm (6.9 in)	205mm (8.1 in)	254mm (10 in)	254mm (10 in)
Depth behind surface	102mm (4 in)	100mm (4 in)	95mm (3.7 in)	80mm (3.1 in)	101mm (4 in)	109mm (4.3 in)	109mm (4.3 in)
Protrusion	63mm (2.5 in)	4mm (0.2 in)	4mm (0.2 in)	4mm (0.2 in)	4mm (0.2 in)	4mm (0.2 in)	4mm (0.2 in)
Weight	2.6kg (5.7 lb)	2.2kg (4.8 lb)	1.8kg (4.1 lb)	1.5kg (3.4 lb)	1.6kg (3.5 lb)	1.7kg (3.8 lb)	1.7kg (3.8 lb)



Custom Installation Series

CWM800	CWM650	CWM500	CWM6260	CWM6160	CWM Cinema	CDS6 S3
2-way in-wall system	2-way in-wall system	2-way in-wall system	2-way in-wall system	2-way in-wall system	2-way magnetically shielded in-wall system	2-way in-wall dipole/monopole surround system
1x ø25mm (1 in) aluminium dome high-frequency 1x ø200mm (8 in) Kevlar® cone bass/midrange	1x ø25mm (1 in) aluminium dome high-frequency 1x ø165mm (6.5 in) Kevlar® bass/midrange	1x ø25mm (1 in) Ultra 12 tweeter 1x ø130mm (5 in) Kevlar® cone bass/midrange	1x ø25mm (1 in) textile dome tweeter 1x ø165mm (6.5 in) glassfibre cone bass/midrange	1x ø25mm (1 in) Ultra 12 tweeter 1x ø185mm (6.5 in) glassfibre cone bass/midrange	1x ø25mm (1 in) aluminium dome high-frequency 2x ø130mm (5 in) Kevlar® cone bass/midrange	1x ø25mm (1 in) aluminium dome high-frequency 2x ø90mm (3 in) paper cone midrange/high frequency 1x ø130mm (5 in) Kevlar® cone bass/midrange
35Hz and 30kHz	45Hz and 30kHz	50Hz and 22kHz	40Hz and 30kHz	40Hz and 22kHz	50Hz and 30kHz	63Hz and 42kHz (monopole) or 15kHz (dipole)
150W	130W	100W	130W	130W	150W	100W
371mm (14.6 in)	310mm (12.2 in)	228mm (9 in)	310mm (12.2 in)	310mm (12.2 in)	255mm (10 in)	285mm (11.2 in)
225mm (10 in)	216mm (8.5 in)	175mm (6.9 in)	216mm (8.5 in)	218mm (8.5 in)	371mm (14.6 in)	373mm (14.7 in)
337mm (13.3 in)	281mm (11.1 in)	212mm (8.3 in)	281mm (11.1 in)	281mm (11.1 in)	220mm (8.7 in)	247mm (9.8 in)
220mm (8.7 in)	186mm (7.3 in)	156mm (6.1 in)	186mm (7.3 in)	186mm (7.3 in)	337mm (13.3 in)	335mm (13.2 in)
95mm (3.7 in)	85mm (3.3 in)	85mm (3.3 in)	93mm (3.7 in)	89mm (3.5 in)	85mm (3.4 in)	71mm (2.8 in)
3mm (0.1 in)	3mm (0.1 in)	3mm (0.1 in)	3mm (0.1 in)	3mm (0.1 in)	3mm (0.1 in)	71mm (2.8 in)
2.9kg (6.3 lb)	2.4kg (5.3 lb)	1.4kg (3.1 lb)	2.9kg (6.4 lb)	1.6kg (3.5 lb)	3.7kg (8.2 lb)	3.9kg (8.6 lb)


Custom Installation Series

CCM636	CCM626	CCM616	CCM646S
2-way in-ceiling system	2-way in-ceiling system	2-way in-ceiling system	2-way dual channel in-ceiling system
1x ø25mm (1 in) textile dome, adjustable high-frequency angle 1x ø165mm (6.5 in) glassfibre cone bass/midrange	1x ø25mm (1 in) Ultra 12, adjustable high-frequency angle 1x ø165mm (6.5 in) glassfibre cone bass/midrange	1x ø25mm (1 in) Ultra 12 high-frequency 1x ø165mm (6.5 in) glassfibre cone bass/midrange	2x ø25mm (1 in) Ultra 12 high-frequency 1x ø165mm (6.5 in) glassfibre cone bass/midrange
40Hz and 30kHz	40Hz and 22kHz	40Hz and 22kHz	40Hz and 22kHz
130W	130W	130W	130W
232mm (9.1 in)	232mm (9.1 in)	232mm (9.1 in)	232mm (9.1 in)
205mm (8.1 in)	205mm (8.1 in)	205mm (8.1 in)	205mm (8.1 in)
103mm (4.1 in)	103mm (4.1 in)	103mm (4.1 in)	103mm (4.1 in)
4mm (0.2 in)	4mm (0.2 in)	4mm (0.2 in)	4mm (0.2 in)
1.5kg (3.3lb)	1.5kg (3.3lb)	1.4kg (3 lb)	1.7kg (3.8 lb)



B&W Bowers & Wilkins

B&W Group Ltd
Dale Road
Worthing West Sussex
BN11 2BH England

T +44 (0) 1903 221800
F +44 (0) 1903 221801
info@bwgroup.com
www.bwspeakers.com

B&W Group (UK Sales)
T +44 (0) 1903 221 500
E uksales@bwgroup.com

B&W Group North America
T +1 978 664 2870
E marketing@bwgroupusa.com

B&W Group Asia
T +852 2 790 8903
E info@bwgroup.hk

ICEpower is a registered trademark of B&O ICEpower A/S.

Kevlar is a registered trademark of DuPont.

Nautilus and Matrix are trademarks of B&W Group Ltd.

Copyright © B&W Group Ltd. Stands featured within

this brochure are not supplied with the speakers. E&OE.

Design Thomas Manns & Company. Printed in the UK.

Photography by Steve Rees, Andreas Schmidt, James Balston,

Tim Goffe, Ken Kirkwood, Subway.

B&W Group Ltd reserve the right to amend
details of the specifications without notice in line with
technical developments.